

I80 Corridor Coalition 2012 NDOT DII Update



Mike Fuess, PE, PTOE (NDOT)
Thor Dyson, PE, CPM (NDOT)



EXIT
4

INTERSTATE
WEST CO.

CTI

HUMMER

Call 899
877.725.6886



W

Caltrans Turning Trucks at Exit 1
02/03/08



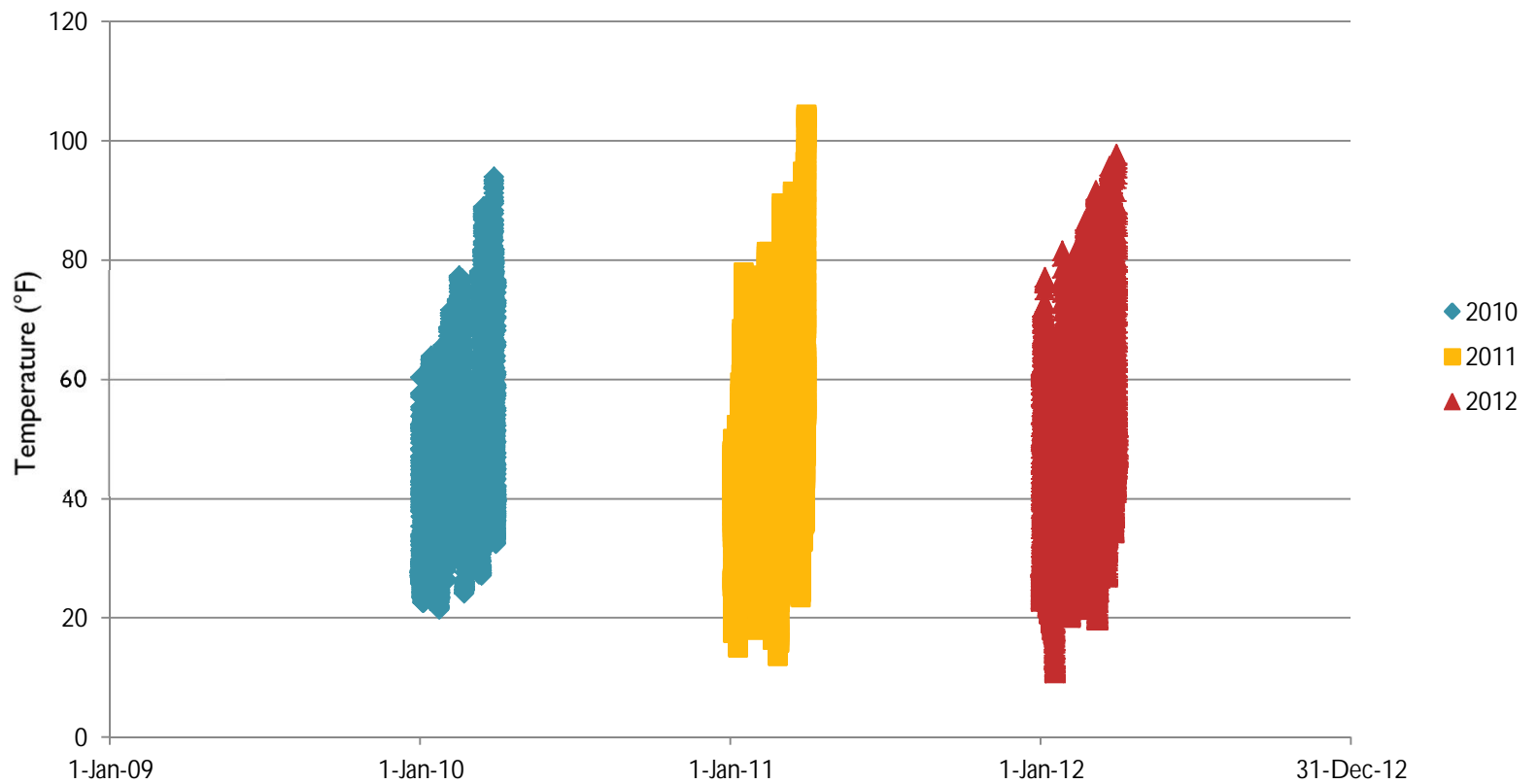
2011/2012 ~ I80 Interstate Winter Weather Coordination

	Jan – Mar 2011	Jan – Mar 2012
Number Truck Prohibitions on I80	9	2
Number of freeway closures on I80	5	0

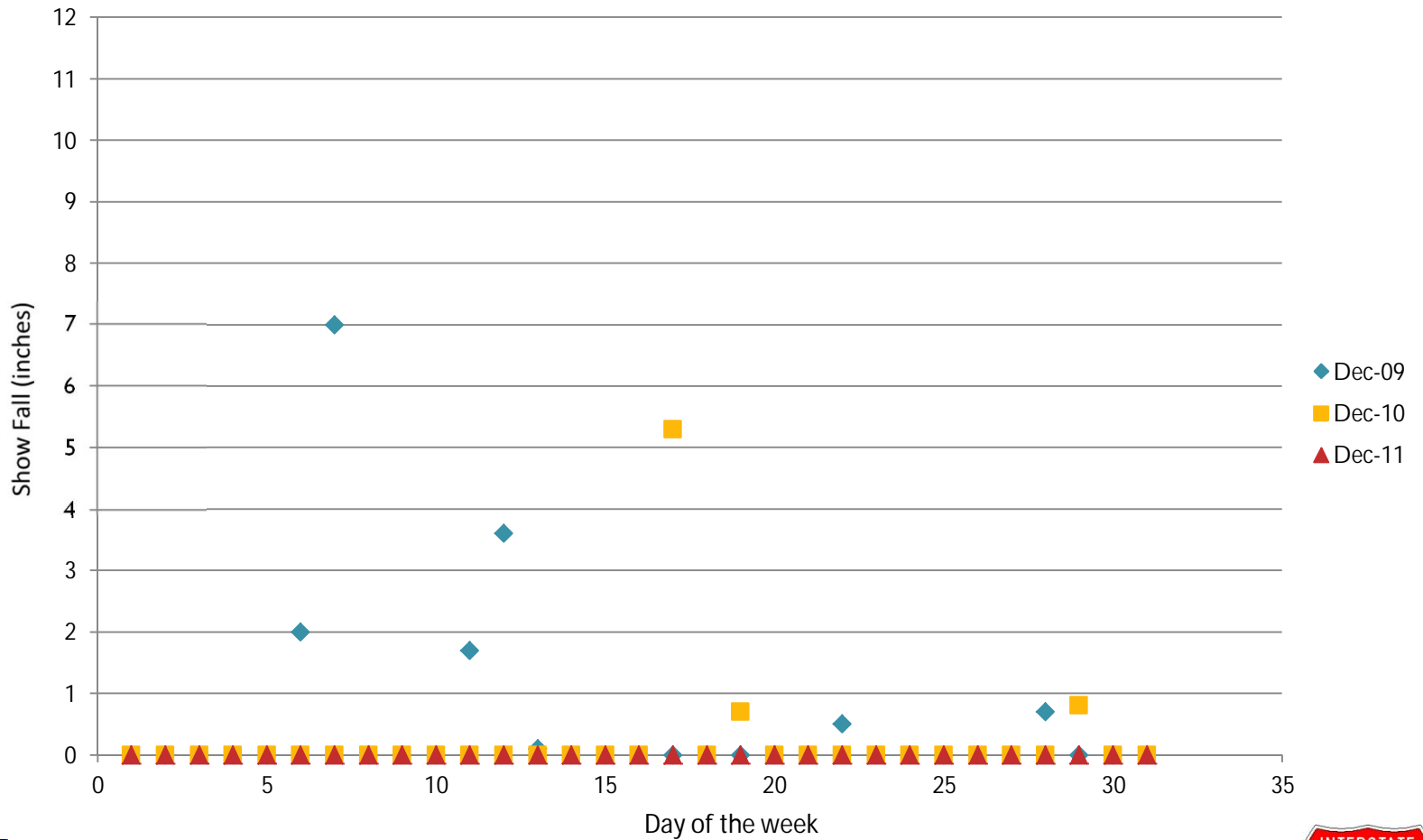
	Jan – Mar 2011	Jan – Mar 2012
Duration of Truck Prohibitions on I80	113hr 52min	10hr
Duration of freeway closures on I80	53hr 53min	0

Pavement Temperature

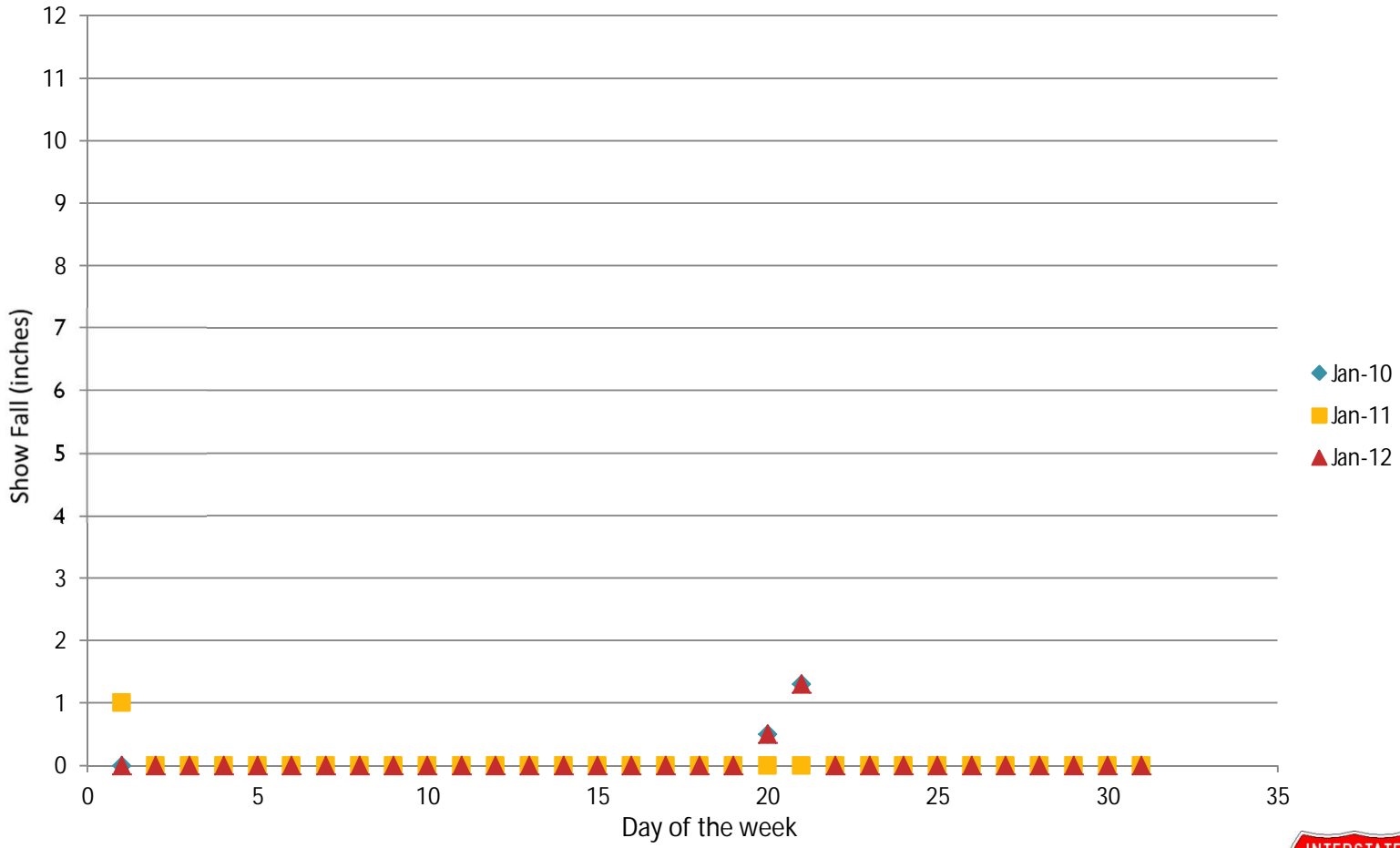
January - March



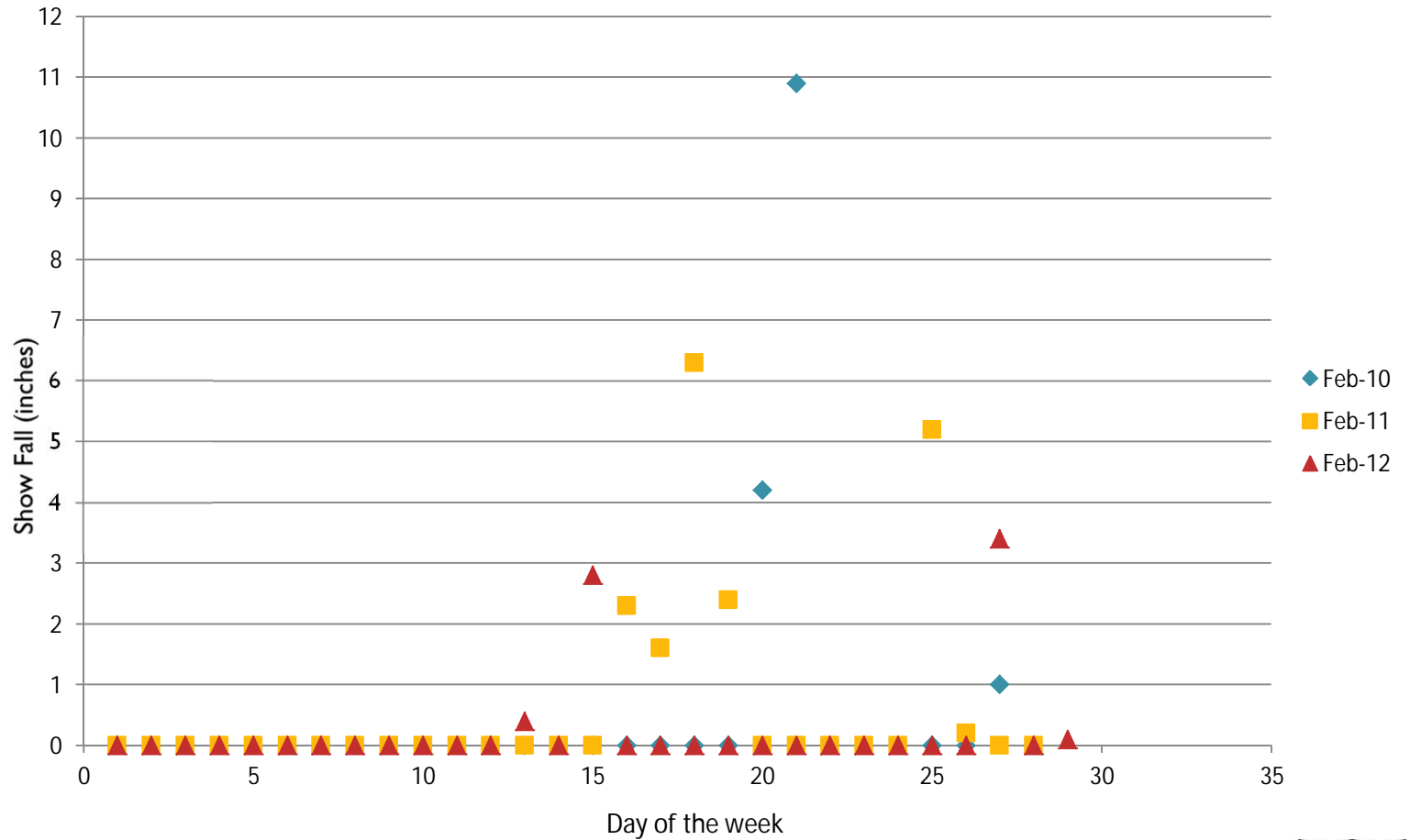
December Snow Fall



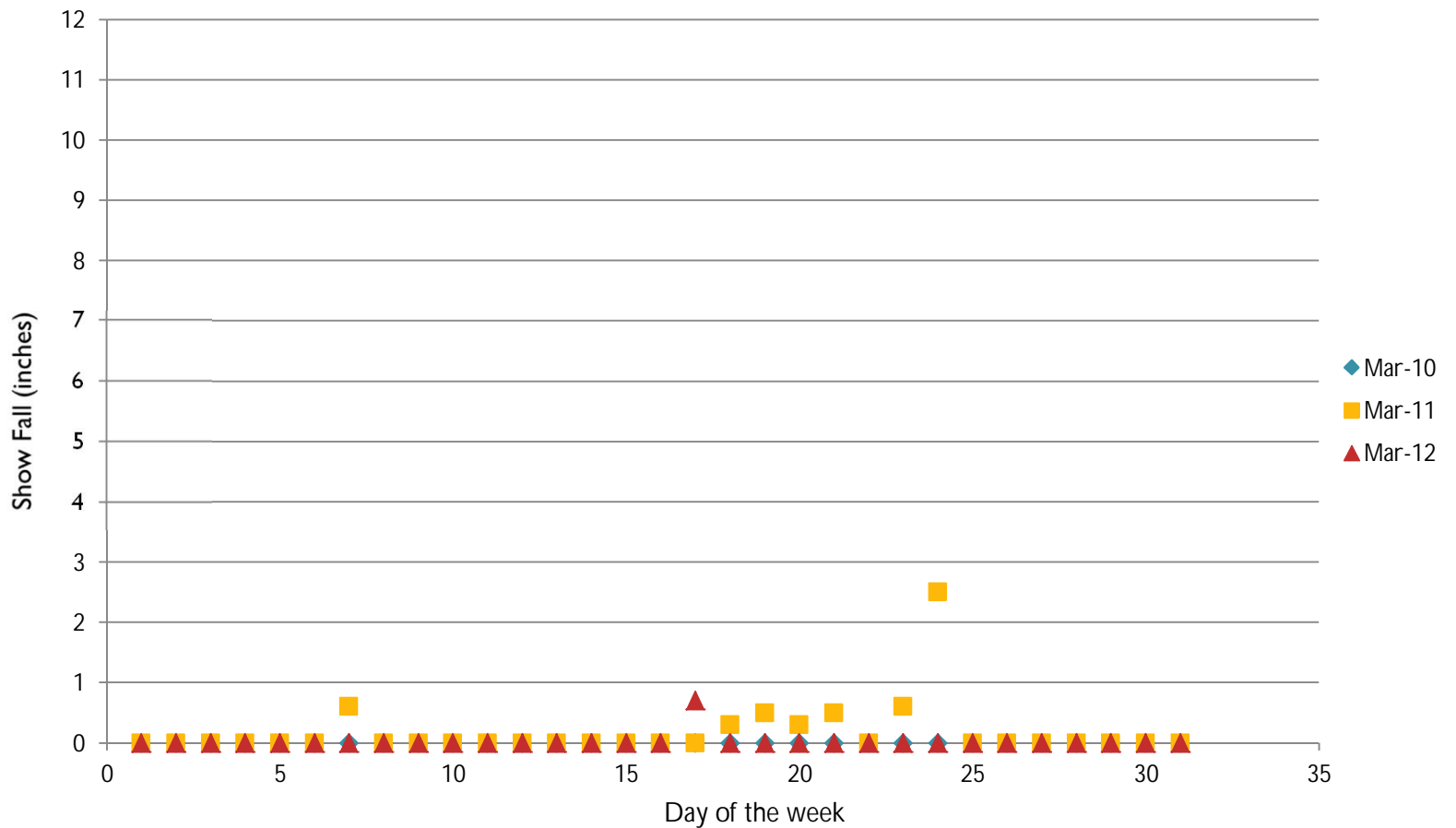
January Snow Fall



February Snow Fall



March Snow Fall



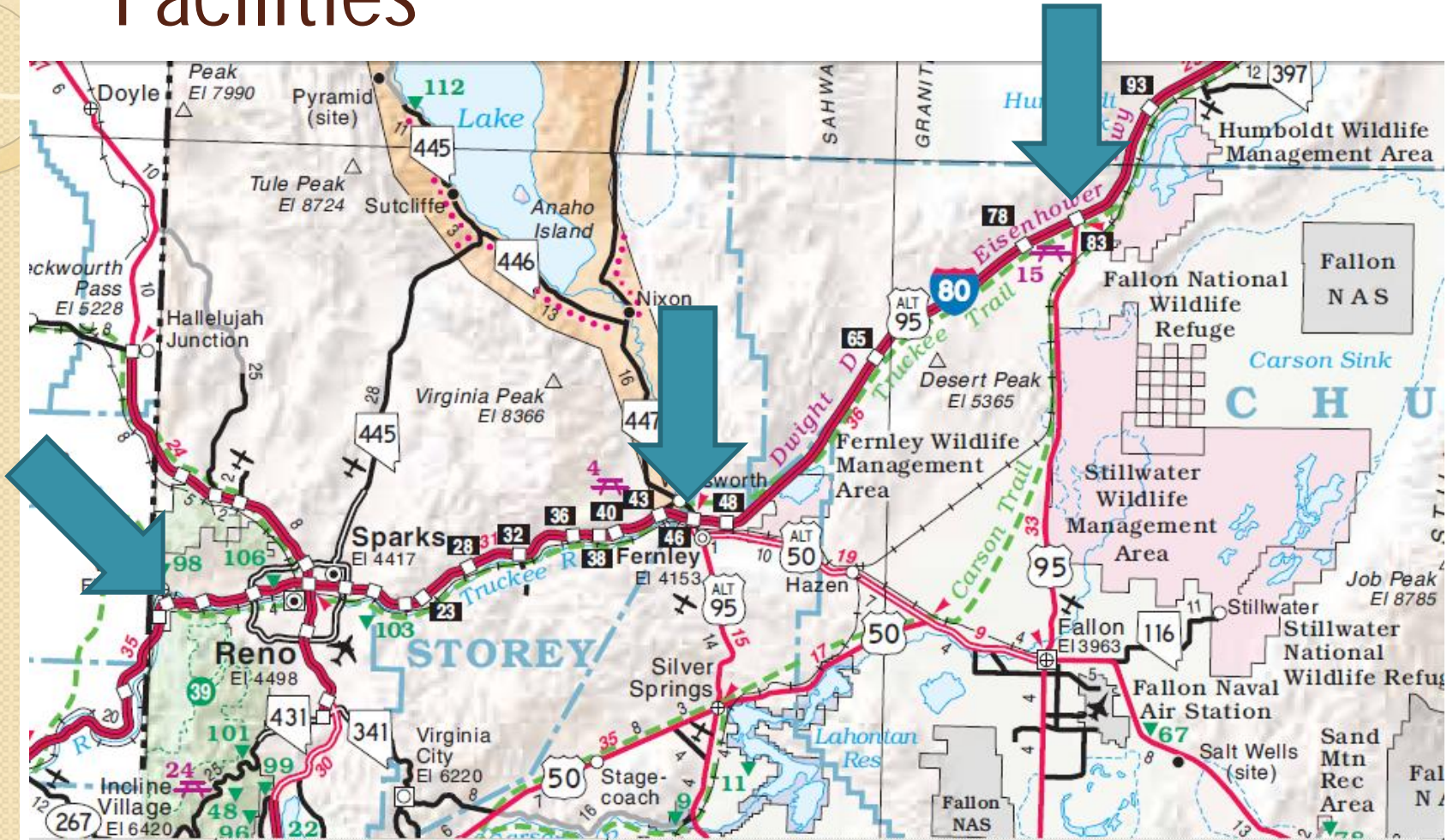
Progress this year

- I80 Design Build Project
- NDOT Fernley Truck Parking Facility
- In the process of acquiring 2 tow plows for Northern Nevada
- Web access to NDOT systems

I80 Design Build Project

- Pavement Reconstruction Keystone to 4th
- Full ITS deployment from Robb to Vista
- New overhead signs
- New auxiliary lanes
- Emphasis on contractor innovation

Proposed Leased Truck Parking Facilities





UDOT Tow Plow



Expectations for this winter

- Same plan as previous years
- May have more challenges than normal for major events
- Interstate conference call

NDOT DII Challenges

- Reduced operating budgets
- Less maintenance resources
- Aging fleet & no new vehicles in 4 years
- Retirements
- More than normal new hires
- Accelerated promotions
- Minimal winter weather last year

Graduated Guidelines for Handling I-80 W/B Closures and Truck Prohibitions

Level	Estimated Closure Duration (hrs)	Activate <i>NDOT ITS Devices</i>			Manned Truck-screening E of Reno
		Permanent DMSs	DMS Message TRUCKS or ALL VEHICLES	Activate "When Flashing" signs at Trinity & Wadsworth	
I	< 3 hrs	Reno (4 total), Fernley, Trinity, Humboldt	TURNING TRUCKS <u>XX</u> MILES AHEAD or I-80 CLOSED AT CA STATELINE CALL 511 FOR ROAD INFO	"I-80 Closed to Trucks at Stateline"	No
II	3 - 6	Elko, Winnemucca	I-80 CLOSED TO TRUCKS AT CA STATE LINE CALL 511 FOR ROAD INFO or I-80 CLOSED AT CA STATELINE CALL 511 FOR ROAD INFO	"I-80 Closed to Trucks at Stateline"	No
III	6 - 12	Wendover, Wells, Elko, Winnemucca	I-80 CLOSED TO TRUCKS AT CA STATE LINE CALL 511 FOR ROAD INFO or I-80 CLOSED AT CA STATELINE CALL 511 FOR ROAD INFO	"I-80 Closed to Trucks at Stateline"	No
IV	12 - 24	Wendover, Wells, Elko, Winnemucca	I-80 CLOSED TO TRUCKS AT CA STATE LINE, USE ALT ROUTE CALL 511 FOR ROAD INFO or I-80 CLOSED AT CA STATE LINE USE ALT ROUTE CALL 511 FOR ROAD INFO	"All Trucks Must Use Next Exit"	Yes
V	> 24	Wendover, Wells, Elko, Winnemucca	I-80 CLOSED TO TRUCKS AT CA STATE LINE, USE ALT ROUTE CALL 511 FOR ROAD INFO or I-80 CLOSED AT CA STATE LINE USE ALT ROUTE CALL 511 FOR ROAD INFO	"All Trucks Must Use Next Exit"	Yes

NDOT ITS Links

- The NDOT Dashboard for field device data:
<http://bugatti.nvfast.org/Dashboard2/>
- NDOT Live Streaming Video:
<http://apps.nevadadot.com/cameras/default-Reno.asp>
- NDOT Weather Station Data:
<http://apps.nevadadot.com/RWIS/>
- NDOT Video to Web (Password and Form required)
<http://v2w.its.nv.gov/>

<http://v2w.its.nv.gov/#>
Google

File Edit View Favorites Tools Help

Favorites Job... Pro... KLO... Sec... Ren... UCL HEP Ye... NET... ipmu Web... Mod... SLA... Wri... CCT... Cisco... 11 z-O... Ba... Sor... Log...

Web Client 3 Web Client 3

NEVADA
DOT

Help

Reno Elko

 New window New tab Delete tab Save tab

 Logged in as **ilopez** Log out

Device Tre

Quick Search

RENO DISTRICT 2

- Cameras
- 1580 and Glendale Overpass
- 1580 and I80 Interchange A
- 1580 and I80 Interchange B
- 1580 and Kietzke Overpass
- 1580 and Mill Overpass
- 1580 and Plumb Offramp
- 1580 and Villanova Onramp
- 180 and 4th St
- 180 and Galletti
- 180 and Keystone
- 180 and McCarran East
- 180 and McCarran West
- 180 and Nugget
- 180 and Pyramid
- 180 and Rock
- 180 and Sierra
- 180 and Sparks
- 180 and US395
- 180 and Valley
- 180 and Vine
- 180 and Vista
- SR431 and Meadows
- Yreka Demo Camera

ELKO DISTRICT 3

- Cameras

Bing Map

2D 3D Road Aerial Bird's eye Labels

1 miles

© 2012 Microsoft Corporation © 2010 NAVTEQ © AND

Video - I80 and Vista

I80/VISTA BLVD

WEST

Custom view

Video - I80 and Sparks

I80/ SPARKS BLVD

SOUTH

Custom view

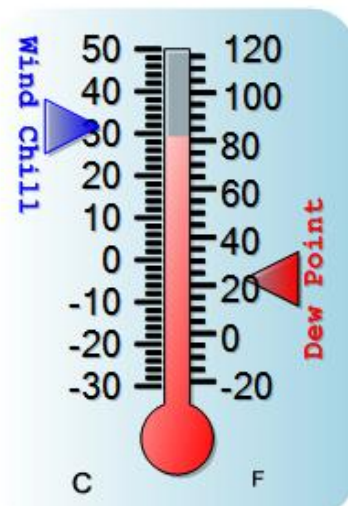
RWIS Web Site

Station Listing [Return to Station List](#)

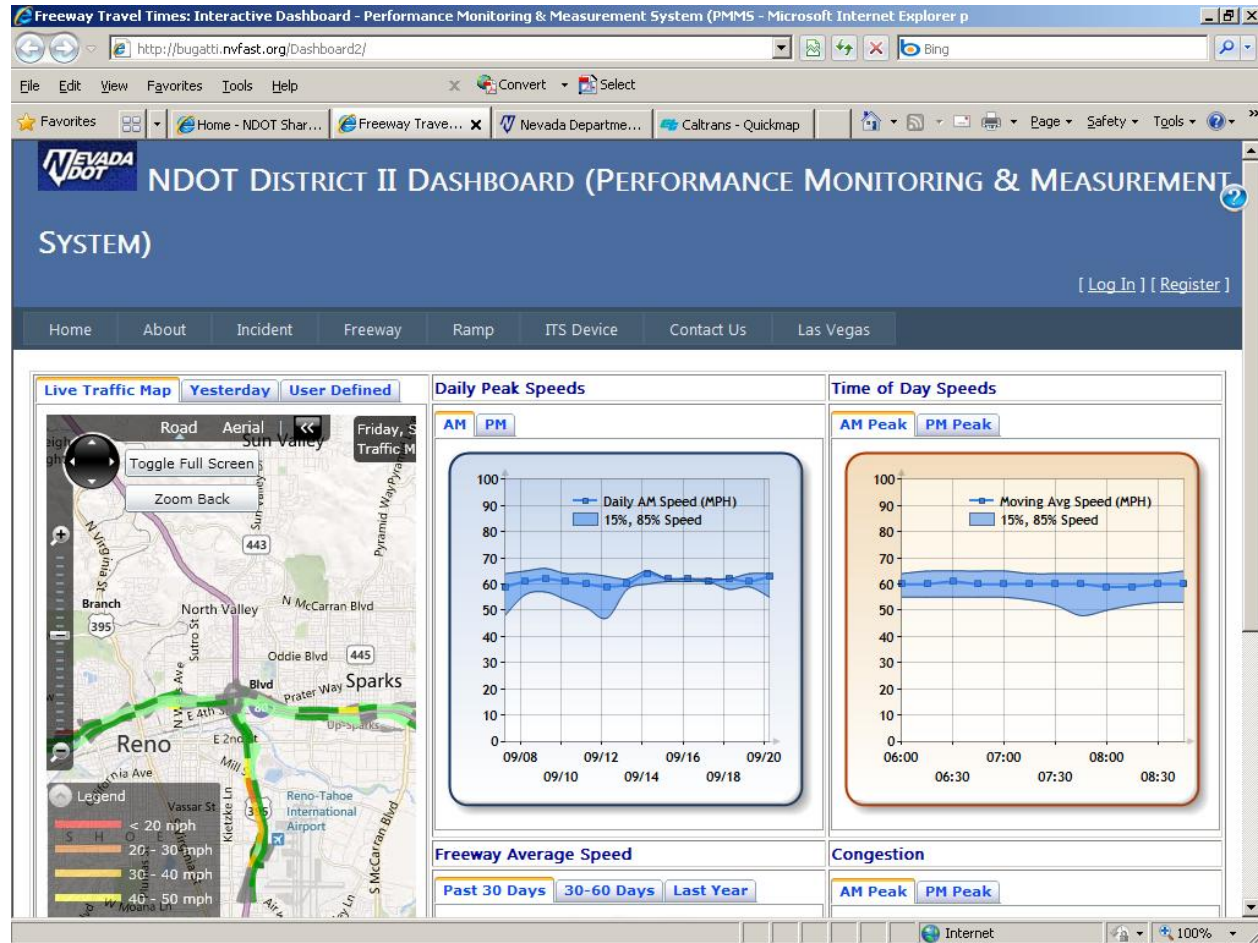
Latest Readings

Date / Time: 9/22/2011 6:48:00 PM

Wind Speed: **8.51 mph**
Wind Direction: **88 from the E**
Wind Gust Speed: **15.46 mph**
Wind Gust Direction: **154 from the SE**
Air Temperature: **83.80 °F**
Relative Humidity: **11 %**
Dew Point: **24.60 °F**
Is it Raining?:
Rain Rate: **0 in/hr**
Wind Chill: **87.93 °F**



District II ITS Data Dashboard



Questions?



Contact Info

- Thor Dyson, PE, CPM
- District Engineer
775.834.8300
tdyson@dot.state.nv.us
- Mike Fuess, PE, PTOE
- District Traffic Engineer
775.834.8300
mfuess@dot.state.nv.us
- John Talbott
- NNROC Supervisor
775.834.8365
jtalbott@dot.state.nv.us

